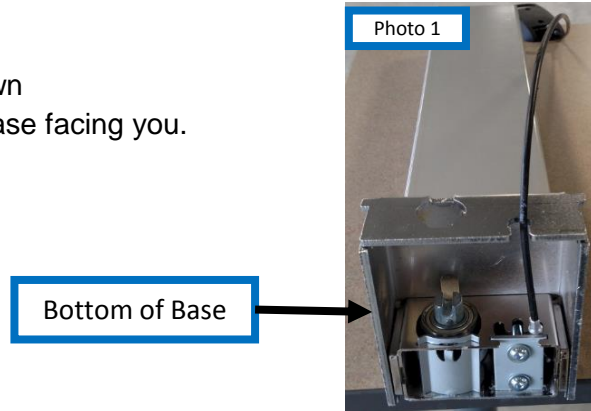


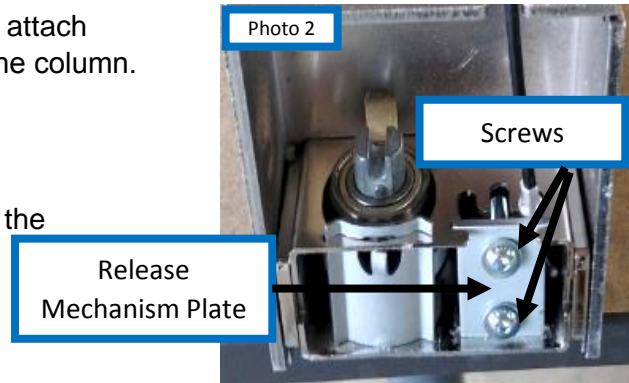
Instructions for Replacing Cable-Paddle Assembly on Gas Columns.

A. Removal of existing cable

1. Position the column on a flat surface as shown in photo 1 below, so that the bottom of the base facing you.



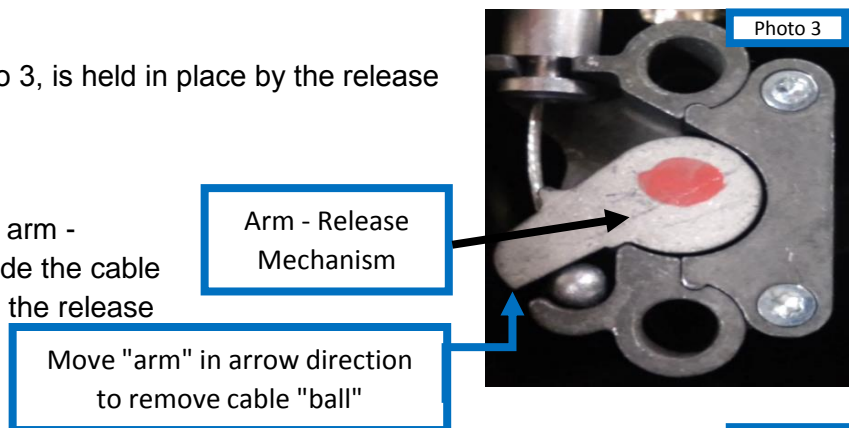
2. Remove the two screws, shown in photo 2, that attach the gas cylinder "release mechanism plate" to the column.



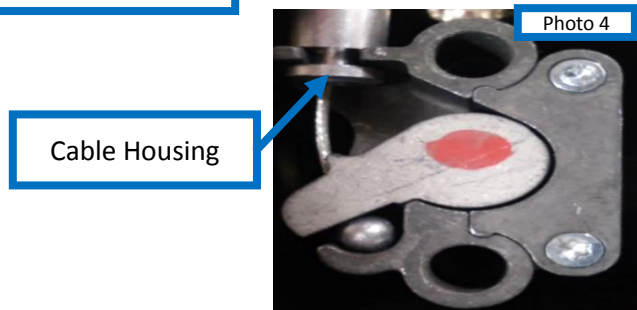
3. Slide the plate, shown in photo 2, up and out of the column, this will expose the gas cylinder release mechanism to paddle connection.

4. The cable "ball" shown in photo 3, is held in place by the release mechanism's arm.

5. To release the cable move the arm - release mechanism up and slide the cable (ball end) out from the arm on the release mechanism.



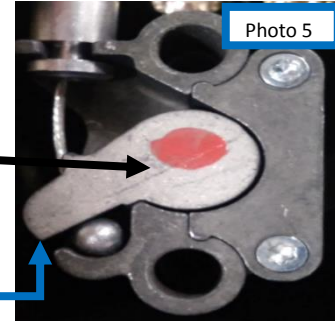
6. Lift the end of the cable housing up and out from the gas cylinder - release mechanism as shown in photo 4.



Instructions for Replacing Paddle-Cable Assembly on Gas Columns.

B. Installation of new cable

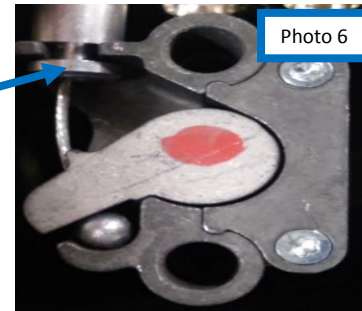
1. Move the arm - release mechanism up and slide the cable (ball end) through the "arm" as shown in photo 5, release "arm".



Arm - Release Mechanism

Move "arm" in arrow direction to install cable "ball"

2. Press end of the cable housing down on to gas cylinder - release mechanism as shown in photo 6.



End - Cable Housing

3. Slide end of the cable housing into outside slot on column as shown in photo 7.

End - Cable Housing

4. Slide plate down into column, shown in photo 8. Position feet on plate into slots on column and slide plate into place.



Photo 8

Slots on column

5. Push screws through plate into release mechanism as shown in photo 7. Tighten screws.



Photo 7

Screws